

Agency Updates: WWA



Kyle Magyera
Local Government Outreach Specialist
WCCA Spring Conference 2015

Land Use & Wetlands Advisory Group

12 Members

- Mix of land use and conservation staff
- WCCA reps: Dan Bowers and Chris Mrdutt

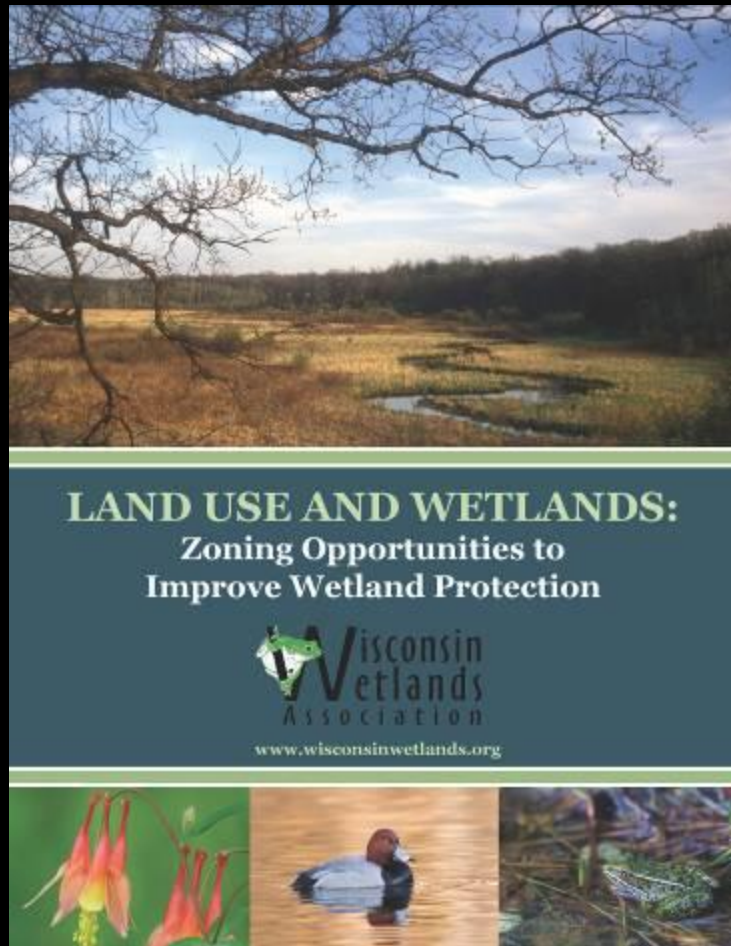
Main Tasks

- Review Model Wetland Ordinance
- Review publication for local officials

Vision

- Keep the group active long-term

Model Wetland Ordinance



Supplement to Wetland Zoning Guidebook

- Lead author: Brian Ohm
- Input from Land Use and Wetland Advisory Group
- Strong, solution-oriented policy options
- Additional research into county, municipal and tribal approaches to wetland protection

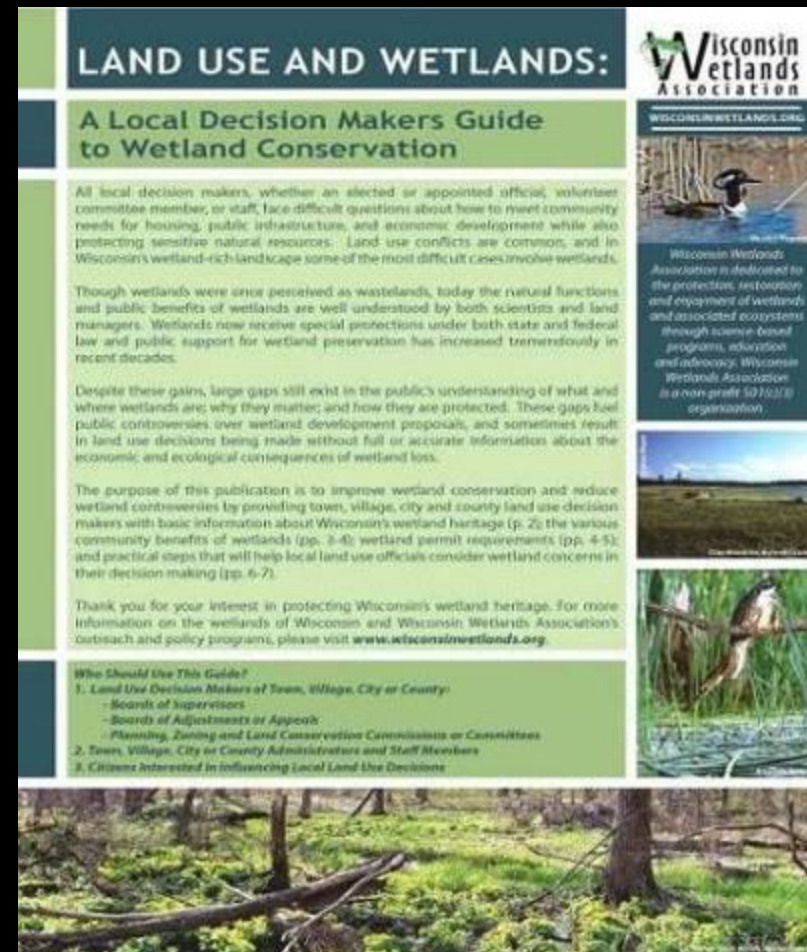
Available ~ June 2015

New Publication

Designed for local officials

- Update to LDMG
- Use in CLUE Plan Commission and BOA workshops
- Input from Land Use and Wetland Advisory Group
- Focus → development review w/ some emphasis on community planning and plan implementation

Available ~June 2015



Wetland/Watershed Planning Symposium

GeoSpatialServices



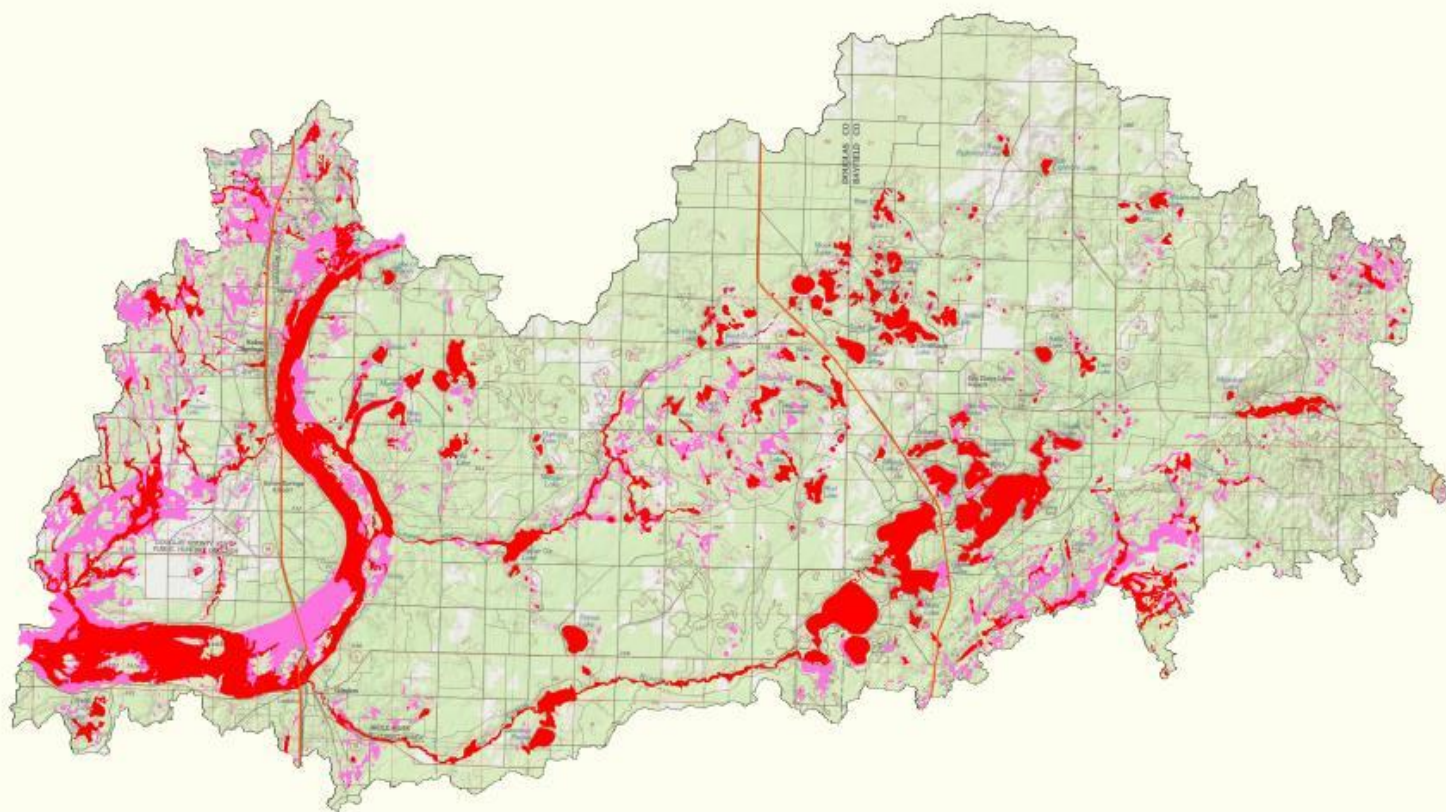
Discussed barriers and opportunities for watershed-scale assessments.

– *WCCA reps in attendance*

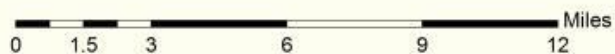
These projects help you to:

1. Evaluate/rank/model wetland functions or potential functions (NWI+)
2. Prioritize protection or restoration to meet various objectives





Surface Water Detention (SWD)



Surface Water Detention



Field-Based Workshops

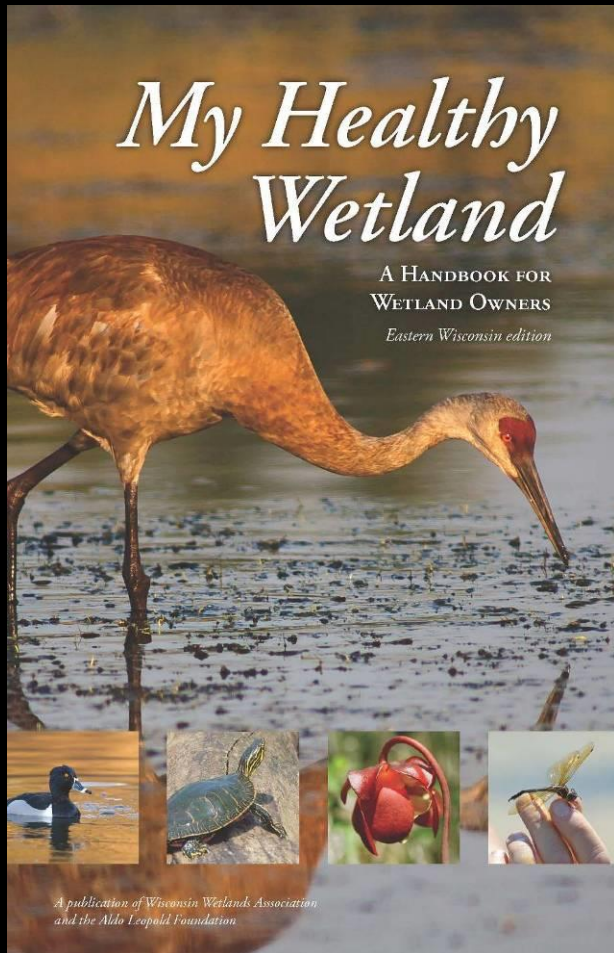
Trained 160 from ~50 counties

Advanced Reading the Wetland Landscape Workshops

- Early June: Lincoln Co.
- June 30: Green Bay Duck-Pensaukee Watershed
- September: Eau Claire area



Private Landowner Outreach



My Healthy Wetlands Handbook

- Available for order online - \$5

Landowner Workshops

- Sheboygan/Ozaukee Co.
- Door County

Advocacy Priorities

State Budget

- Cuts to DNR Science Services
- Cuts to UWEX Natural Resources Educators
- Cuts to County Land & Water Conservation Depts

EPA WOTUS Rule

- Clarifications to federal wetland jurisdiction

Stay up to date

- Wetland Alerts, Facebook, and Twitter

Questions?

Kyle Magyera | Local Gov't Outreach Specialist

- 608.250.9971
- Kyle.magyera@wisconsinwetlands.org
- Wisconsinwetlands.org
- Facebook.com/WisconsinWetlands
- Twitter.com/WIWetlandsAssoc